

- lobar degeneration with right anterior temporal hypometabolism. Brain, 2009, 132(Pt 3):604-616.
- [18] Kanda T, Ishii K, Uemura T, Miyamoto N, Yoshikawa T, Kono AK, Mori E. Comparison of grey matter and metabolic reductions in frontotemporal dementia using FDG - PET and voxel - based morphometric MR studies. Eur J Nucl Med Mol Imaging, 2008, 35: 2227-2234.
- [19] Jeong Y, Cho SS, Park JM, Kang SJ, Lee JS, Kang E, Na DL, Kim SE. <sup>18</sup>F-FDG PET findings in frontotemporal dementia: an SPM analysis of 29 patients. J Nucl Med, 2005, 46:233-239.
- [20] Diehl - Schmid J, Grimmer T, Drzezga A, Bornschein S, Riemenschneider M, Förstl H, Schwaiger M, Kurz A. Decline of cerebral glucose metabolism in frontotemporal dementia: a longitudinal <sup>18</sup>F-FDG-PET-study. Neurobiol Aging, 2007, 28:42-50.
- [21] Womack KB, Diaz - Arrastia R, Aizenstein HJ, Arnold SE, Barbas NR, Boeve BF, Clark CM, DeCarli CS, Jagust WJ, Leverenz JB, Peskind ER, Turner RS, Zamrini EY, Heidebrink
- [22] JL, Burke JR, DeKosky ST, Farlow MR, Gabel MJ, Higdon R, Kawas CH, Koeppe RA, Lipton AM, Foster NL. Temporoparietal hypometabolism in frontotemporal lobar degeneration and associated imaging diagnostic errors. Arch Neurol, 2011, 68:329-337.

(收稿日期:2014-01-22)

## · 临床医学图像 ·

### 过渡型(混合性)脑膜瘤

doi: 10.3969/j.issn.1672-6731.2014.03.021

#### Transitional (mixed) meningioma

YAN Xiao-ling

Department of Pathology, Tianjin Huanhu Hospital, Tianjin 300060, China (Email: ll934065@126.com)

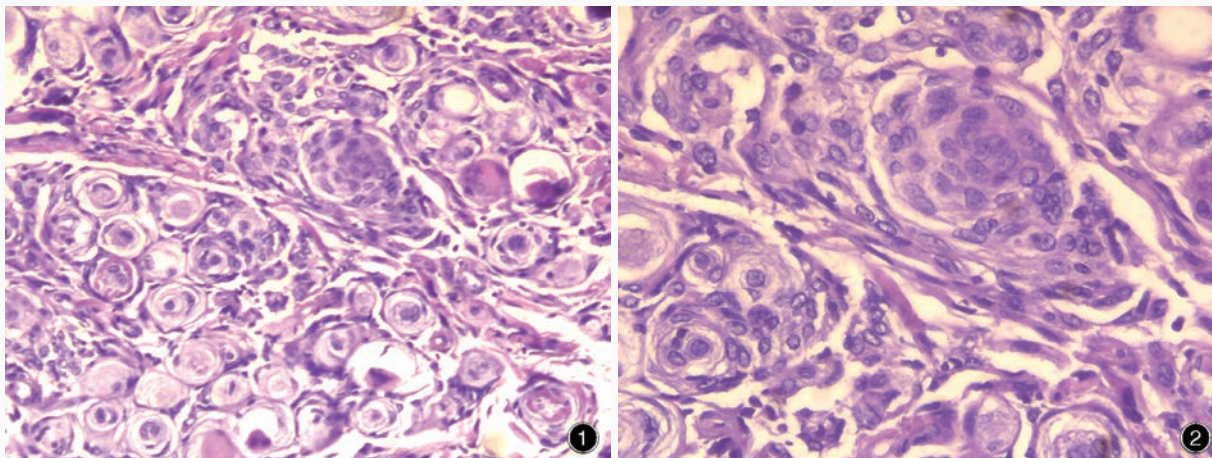


图1 光学显微镜观察肿瘤细胞排列成分叶状和束状结构,“漩涡”状结构明显 HE染色 低倍放大 图2 光学显微镜观察可见合体细胞岛结构 HE染色 中倍放大

**Figure 1** Optic microscopy findings. Tumor cells were arranged as lobulated and fasciculated structure with obvious circinate form. HE staining low power magnified **Figure 2** Optic microscopy findings. Syncytial cell islands could be seen. HE staining medium power magnified

过渡型(混合性)脑膜瘤为脑膜瘤亚型之一,为临床常见类型。其组织学特征明显,具有脑膜皮细胞型和纤维型脑膜瘤,以及二者之间过渡的组织学特点(图1);合体细胞岛结构与胶原丰富的梭形细胞混合排列(图2),“漩涡”状结构明显且丰富;同时可见较多砂粒体存在。

(天津市环湖医院病理科阎晓玲供稿)