

- [19] Hemphill JC 3rd, Bonovich DC, Besmertis L, Manley GT, Johnston SC. The ICH score: a simple, reliable grading scale for intracerebral hemorrhage. *Stroke*, 2001, 32:891-897.
- [20] Zhu GF. Morden management of acute stroke//Luo ZM, Dong YZ, Peng GG. Management of cerebrovascular diseases. Beijing: the People's Medical Publishing House, 1999: 218.[朱国峰. 急性脑卒中的现代治疗//罗祖明, 董佑忠, 彭国光. 脑血管疾病

治疗学. 北京: 人民卫生出版社, 1999: 218.]

- [21] Han H, Yu XZ, Guo SB. Correlation analysis of cerebral hemorrhage and upper gastrointestinal bleeding. *Zhongguo Ji Jiu Yi Xue*, 2007, 27:696-698.[韩红, 于学忠, 郭树彬. 脑出血并发上消化道出血的相关性分析. *中国急救医学*, 2007, 27: 696-698.]

(收稿日期: 2013-07-10)

· 临床医学图像 ·

中枢神经细胞瘤和脑室外神经细胞瘤

doi: 10.3969/j.issn.1672-6731.2013.09.020

Central neurocytoma and extraventricular neurocytoma

YAN Xiao-ling

Department of Pathology, Tianjin Huanhu Hospital, Tianjin 300060, China (Email: ll934065@126.com)

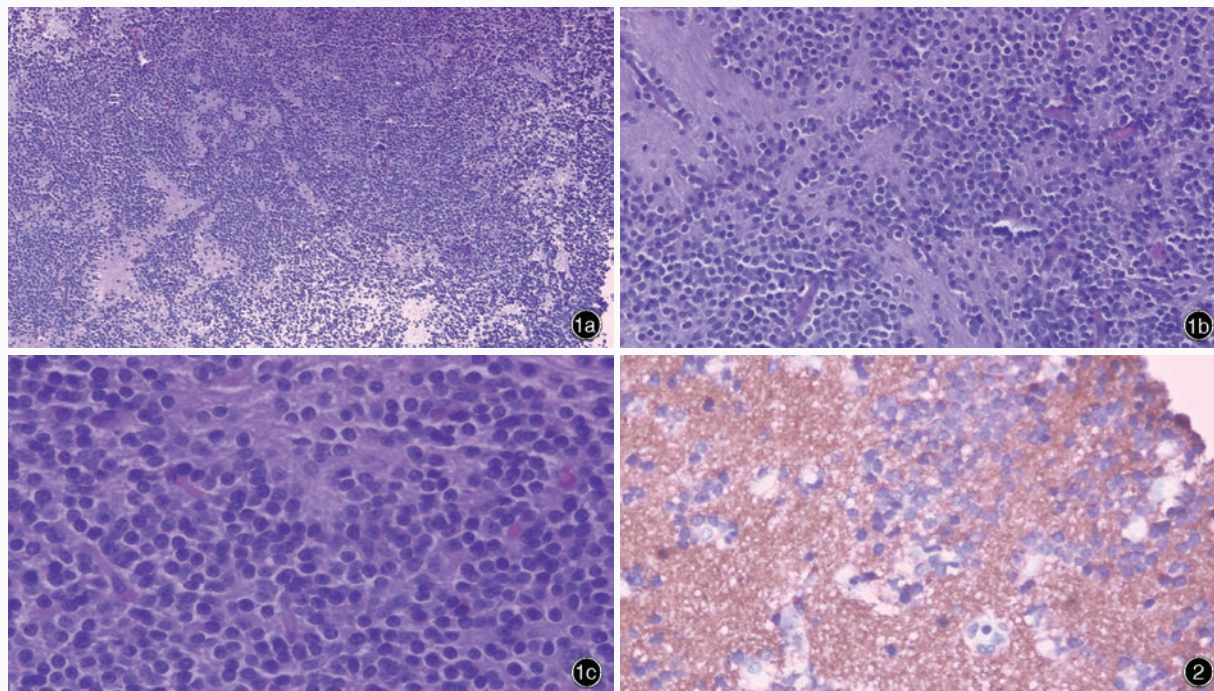


图1 光学显微镜观察所见 HE染色 1a 肿瘤细胞为圆形,呈片状或簇状排列,淡染,胞质呈轻度嗜酸性 低倍放大 1b 可见“假菊形团”结构和纤细的神经毡背景 低倍放大 1c 肿瘤细胞胞质透明,类似少突胶质细胞瘤细胞 中倍放大 图2 光学显微镜观察显示,肿瘤细胞弥漫表达突触素 免疫组织化学染色(EnVision二步法) 中倍放大

Figure 1 Optical microscopic findings. HE staining Round tumor cells with lightly eosinophilic cytoplasm arranged in sheets or small clusters (Panel 1a). low power magnified Pseudorosettes and a fine neuropil background were seen (Panel 1b). low power magnified Tumor cells with clear cytoplasm had features similar to oligodendroglioma (Panel 1c). medium power magnified **Figure 2** Optical microscopic findings. Tumor cells were diffusely positive for synaptophysin. Immunohistochemical staining (EnVision) medium power magnified

肿瘤由形态一致伴神经元分化的圆形细胞组成,位于侧脑室室间孔区(中枢神经细胞瘤)或脑实质内(脑室外神经细胞瘤),好发于青年人,预后良好。肿瘤具有良性组织学形态,典型结构为小而成熟的肿瘤细胞,呈单一片状排列,其间被神经毡背景分隔(图1a);肿瘤细胞呈簇状排列于血管周围,形成室管膜瘤样“假菊形团”结构(图1b);肿瘤细胞形态较一致,内有圆形或卵圆形细胞核,染色质呈细斑点状,偶见核仁;某些区域以透明细胞为主,类似少突胶质细胞瘤结构(图1c);少见的组织学形态为“Homer-Wright 菊形团”结构和神经节细胞。肿瘤细胞弥漫表达突触素(图2)。

(天津市环湖医院病理科阎晓玲供稿)