

of typical MRI findings of brain lesions in multiple sclerosis: a 82 cases report. Zhongguo Xian Dai Shen Jing Ji Bing Za Zhi, 2011, 11:320-324. [初曙光, 李振新, 蒋胜洪, 卢家红, 吕传真, 冯晓源. 多发性硬化脑内病灶 MRI 典型及不典型表现: 附 82 例 MRI 分析. 中国现代神经疾病杂志, 2011, 11:320-324.]

[17] Trojano M, Pellegrini F, Paolicelli D, Fuiani A, Zimatore GB, Tortorella C, Simone IL, Patti F, Ghezzi A, Portaccio E, Rossi P, Pozzilli C, Salemi G, Lugaresi A, Bergamaschi R, Millefiorini E, Clerico M, Lus G, Vianello M, Avolio C, Cavalla P, Iaffaldano P, Drenzo V, D'Onghia M, Lepore V, Livrea P, Comi G, Amato MP, Italian Multiple Sclerosis Database Network Group. Post-marketing of disease modifying drugs in multiple sclerosis: an exploratory analysis of gender effect in interferon beta treatment. J Neurol Sci, 2009, 286(1/2):109-113.

[18] Wolinsky JS, Shochat T, Weiss S, Ladkani D, PROMiSe Trial Study Group. Glatiramer acetate treatment in PPMS: why males appear to respond favorably. J Neurol Sci, 2009, 286(1/2):92-98.

[19] Rudick RA, Kappos L, Kinkel R, Clanet M, Phillips JT, Herndon RM, Sandrock AW, Munschauer FE 3rd. Gender effects on intramuscular interferon beta - 1a in relapsing - remitting multiple sclerosis: analysis of 1406 patients. Mult Scler, 2011, 17:353-360.

[20] Correale J, Ysrraelit MC, Gaitán MI. Gender differences in 1,25 dihydroxyvitamin D3 immunomodulatory effects in multiple sclerosis patients and healthy subjects. J Immunol, 2010, 185: 4948-4958.

(收稿日期: 2013-01-24)

· 临床医学图像 ·

中分化松果体实质肿瘤

doi: 10.3969/j.issn.1672-6731.2013.04.022

**Pineal parenchymal tumor of intermediate differentiation**

YAN Xiao-ling

Department of Pathology, Tianjin Huanhu Hospital, Tianjin 300060, China (Email: ll934065@126.com)

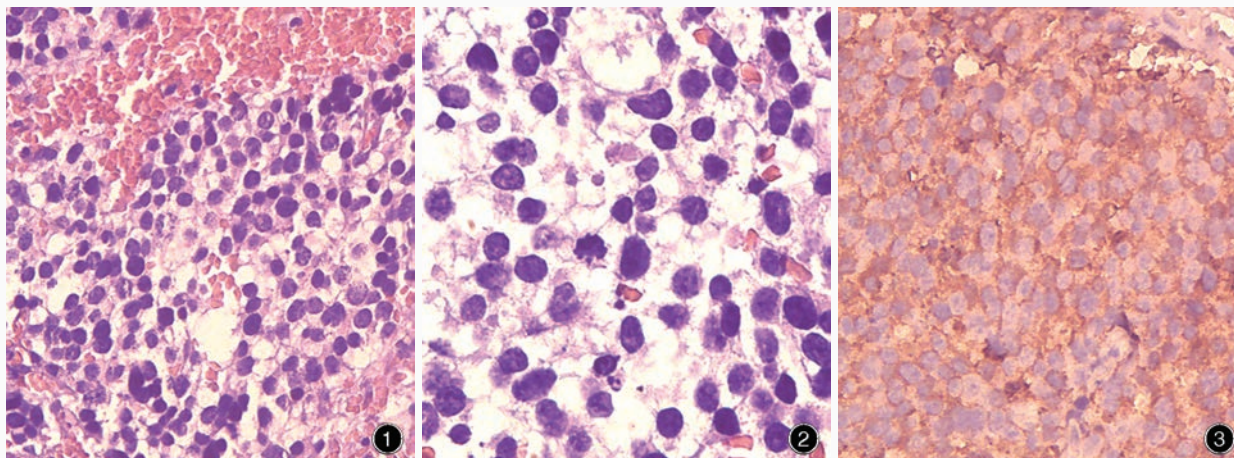


图 1 肿瘤细胞弥漫分布 HE 染色 ×200 图 2 肿瘤细胞胞核大小相对一致 HE 染色 ×400 图 3 肿瘤细胞突触素表达阳性 免疫组织化学染色(EnVision 二步法) ×200

Figure 1 Diffuse distribution of tumor cells. HE staining ×200 Figure 2 Nuclei are relatively uniform with slight anisokaryosis. HE staining ×400 Figure 3 Positive expression for synaptophysin. Immunohistochemical staining (EnVision) ×200

中分化松果体实质肿瘤(PPTID)为中度恶性松果体间质肿瘤,各年龄段均可受累。组织病理学观察显示,由弥漫性片状或分叶状排列、大小较为一致的轻至中度核异形性细胞组成,核分裂活性呈中低水平;偶有肿瘤组织显示松果体细胞瘤和松果体母细胞瘤特征,当上述两种组织病理学特征并存时即可归入中分化松果体实质肿瘤分类中。中分化松果体实质肿瘤在世界卫生组织中枢神经系统肿瘤分级(分类)中相当于WHO II ~ III级,肿瘤细胞呈弥漫性(神经细胞瘤样,图1)或分叶状排列,肿瘤细胞呈中至高密度排列,核仁相对于松果体细胞瘤小而浓染(图2),核分裂活性呈中低水平;免疫组织化学染色突触素(Syn)呈阳性表达(图3)。

(天津市环湖医院病理科阎晓玲供稿)