

- report and review of the literature[J]. Int J Neurosci, 2015, 125: 486-492.
- [11] Liu CF, Han T, Bai YH, Fei CD. Guillain-Barré syndrome after traumatic brain injury: a case report[J]. Xínan Guo Fang Yi Yao, 2012, 22:1131-1132.[刘春风, 韩涛, 白月辉, 费长东. 脑外伤合并吉兰-巴雷综合征 1 例[J]. 西南国防医药, 2012, 22: 1131-1132.]
- [12] Tan IL, Ng T, Vucic S. Severe Guillain - Barré syndrome following head trauma[J]. Clin Neurosci, 2010, 17:1452-1454.
- [13] Rashid A, Kurra S, Lavelle W. Guillain-Barré syndrome after revision lumbar surgery: a case report [J]. Cureus, 2017, 9: E1393.
- [14] Al - Hashel JY, John JK, Vembu P. Unusual presentation of Guillain - Barré syndrome following traumatic bone injuries: report of two cases[J]. Med Princ Pract, 2013, 22:597-599.
- [15] Kusunoki S, Kaida K. Antibodies against ganglioside complexes in Guillain - Barré syndrome and related disorders [J]. J Neurochem, 2011, 116:828-832.
- [16] Lopez PH, Zhang G, Zhang J, Lehmann HC, Griffin JW, Schnaar RL, Sheikh KA. Passive transfer of IgG anti - GM1 antibodies impairs peripheral nerve repair [J]. J Neurosci, 2010, 30:9533-9541.

(收稿日期:2018-11-13)

· 临床医学图像 ·

内淋巴囊肿瘤

doi: 10.3969/j.issn.1672-6731.2019.02.014

Endolymphatic sac tumor

YAN Xiao-ling

Department of Pathology, Tianjin Huanhu Hospital, Tianjin 300350, China (Email: ll934065@126.com)

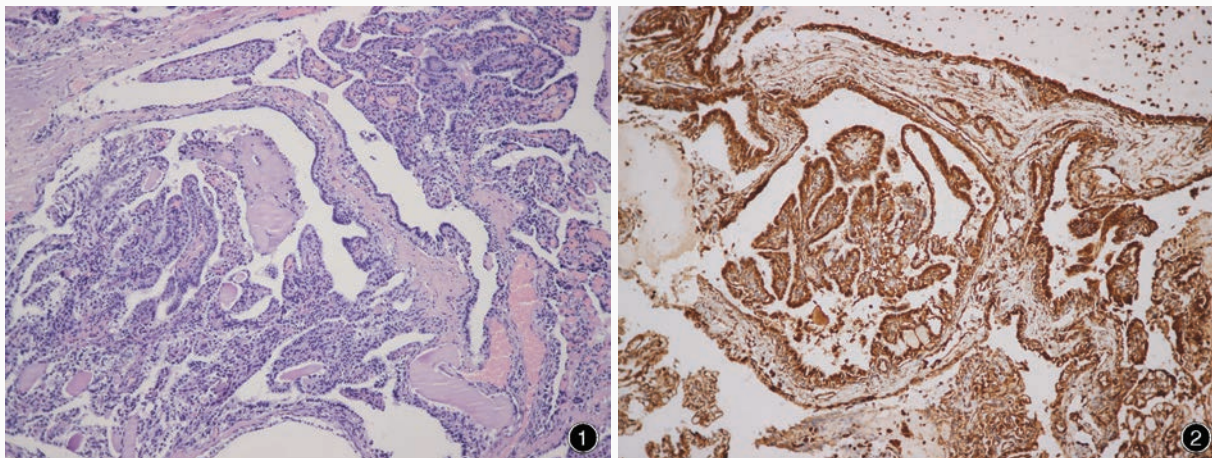


图 1 光学显微镜观察显示,肿瘤组织呈乳头状-囊性结构 HE 染色 × 100 图 2 光学显微镜观察显示,肿瘤细胞胞质 Vim 呈阳性 免疫组织化学染色(EnVision 二步法) × 100

Figure 1 Optical microscopy findings showed characteristic papillary cystic structure of endolymphatic sac tumor. HE staining × 100 Figure 2 Optical microscopy findings showed the cytoplasm of tumor cells was strongly positive for Vim. Immunohistochemical staining (EnVision) × 100

内淋巴囊肿瘤(ELST)是临床罕见的颞骨内淋巴源性神经上皮组织肿瘤,低度恶性,约有 10%与 Von Hippel-Lindau 病(简称 VHL 病)相关。肿瘤组织由乳头状和囊性结构组成(图 1);肿瘤细胞常呈单层排列、也可以呈双层,细胞呈扁平状、细长、矮立方状或柱状,胞核位于细胞中央,胞质呈嗜酸性淡染或透明;肿瘤细胞呈小腺体样和滤泡样排列,部分含高碘酸-雪夫(PAS)染色阳性的胶样分泌物,类似甲状腺样组织;未见核分裂象和坏死。免疫组织化学染色,肿瘤细胞胞质表达细胞角蛋白(CK)和波形蛋白(Vim,图 2),不表达甲状腺球蛋白(TG)和 CD10。

(天津市环湖医院病理科阎晓玲供稿)