

- population-based study[J]. J Dermatol, 2015, 42:824-825.
- [14] Ma L, White RR, Narayanan S, Schmader KE. Economic burden of herpes zoster among skilled nursing facility residents in the United States[J]. J Am Med Dir Assoc, 2012, 13:54-59.
- [15] Firoz BF, Katz TM, Goldberg LH, Geronemus RG, Polder KD, Friedman PM. Herpes zoster in the distribution of the trigeminal nerve after nonablative fractional photothermolysis of the face: report of 3 cases[J]. Dermatol Surg, 2011, 37:249-252.
- [16] Hammersla M, Kapustin JF. Peripheral neuropathy: evidence-based treatment of a complex disorder[J]. Nurse Pract, 2012, 37:32-39.
- [17] Wen SY, Liu WL. Epidemiology of pediatric herpes zoster after varicella infection: a population-based study [J]. Pediatrics, 2015, 135:E565-571.
- [18] Ueshima H, Otake H. Supra-inguinal fascia iliaca block under ultrasound guidance for perioperative analgesia during bipolar hip arthroplasty in a patient with severe cardiovascular compromise: a case report[J]. Medicine (Baltimore), 2018, 97: E12746.
- [19] Ford LB, Matz J, Hankinson T, Prillaman B, Georges G. A comparison of fluticasone propionate nasal spray and cetirizine in ragweed fall seasonal allergic rhinitis [J]. Allergy Asthma Proc, 2015, 36:313-319.
- [20] Preis M, Grother L, Axe P, Breitreutz J. In-vitro and in-vivo evaluation of taste-masked cetirizine hydrochloride formulated in oral lyophilisates[J]. Int J Pharm, 2015, 491(1/2):8-16.
- (收稿日期:2018-09-24)

· 临床医学图像 ·

间变性多形性黄色星形细胞瘤

doi: 10.3969/j.issn.1672-6731.2018.12.014

Anaplastic pleomorphic xanthoastrocytoma

YAN Xiao-ling

Department of Pathology, Tianjin Huanhu Hospital, Tianjin 300350, China (Email: ll934065@126.com)

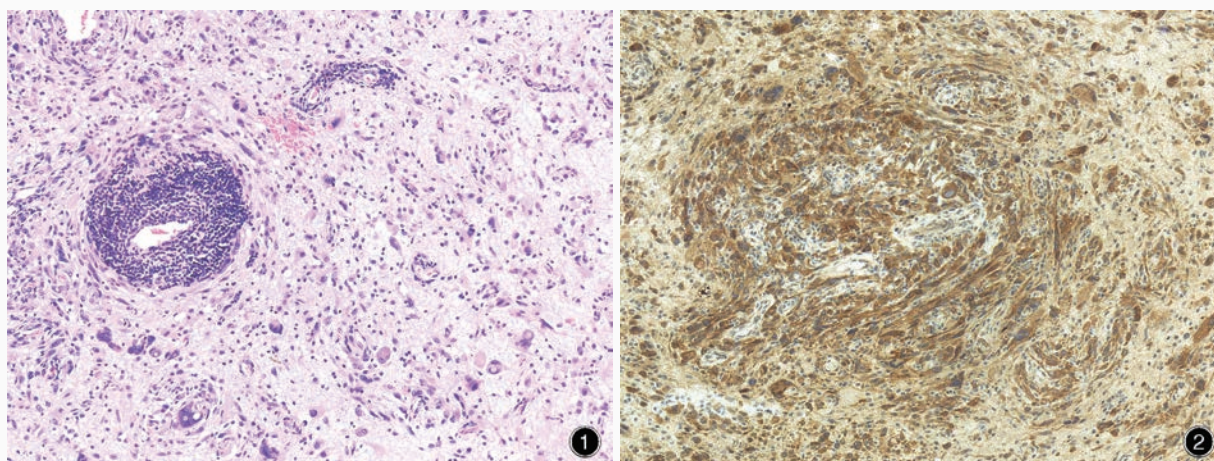


图1 光学显微镜观察显示,肿瘤细胞核和胞质呈多形性和黄色瘤样,间质内可见散在淋巴细胞浸润 HE染色 ×100 图2 光学显微镜观察显示,肿瘤细胞胞质表达BRAF 免疫组织化学染色(EnVision二步法) ×100

Figure 1 Optical microscopy findings revealed that both the nuclei and cytoplasm of tumor cells presented polymorphism and characteristics of xanthoma, with interstitial scattered lymphocytic infiltration. HE staining ×100 **Figure 2** Optical microscopy findings revealed the cytoplasm of tumor cells was positive for BRAF. Immunohistochemical staining (EnVision) ×100

2016年WHO中枢神经系统肿瘤分类第四版修订版定义伴核分裂象 $\geq 5/10$ 个高倍视野(HPF)的多形性黄色星形细胞瘤为间变性多形性黄色星形细胞瘤。组织学形态可见坏死,但不伴核分裂象增加的坏死的临床意义不明。间变性多形性黄色星形细胞瘤BRAF基因突变率低于多形性黄色星形细胞瘤(WHO II级)。该肿瘤好发于儿童和青年,病变部位主要位于大脑表面,癫痫发作为常见临床症状。肿瘤组织由梭形成分以及单核细胞或多核瘤巨细胞相互混杂构成,瘤巨细胞核形态和染色相差较大(图1),常见核内包涵体;部分细胞排列紧密,形成所谓的上皮样细胞;多数细胞含有脂肪,脂肪小滴占据大部分胞体,从而将胞质和细胞器挤向周边。HE染色可见嗜伊红的颗粒小体和灶性聚集的反应性淋巴细胞(图1)。免疫组织化学染色,肿瘤细胞胞质表达胶质纤维酸性蛋白(GFAP)、突触素(Syn)和BRAF蛋白(图2)。

(天津市环湖医院病理科阎晓玲供稿)