

Schrooten M, Van Damme P, Gawel M, Sonoo M, Higashihara M, Noto Y, Kuwabara S, Kiernan MC, Macaskill P, Vucic S. Awaji criteria improves the diagnostic sensitivity in amyotrophic lateral sclerosis: a systematic review using individual patient data[J]. Clin Neurophysiol, 2016, 127:2684-2691.

[15] Yang H, Liu M, Li X, Cui B, Fang J, Cui L. Neurophysiological differences between flail arm syndrome and amyotrophic lateral

sclerosis[J]. PLoS One, 2015, 10:E0127601.

[16] Xu YS, Fan DS. Clinical and neuroelectrophysiologic study of flail arm syndrome[J]. Zhonghua Yi Xue Za Zhi, 2013, 93:23-25.[徐迎胜, 樊东升. 连枷臂综合征的临床和神经电生理研究[J]. 中华医学杂志, 2013, 93:23-25.]

(收稿日期:2017-11-14)

· 临床医学图像 ·

乳头状脑膜瘤

doi: 10.3969/j.issn.1672-6731.2018.01.013

Papillary meningioma

YAN Xiao-ling

Department of Pathology, Tianjin Huanhu Hospital, Tianjin 300350, China (Email: ll934065@126.com)

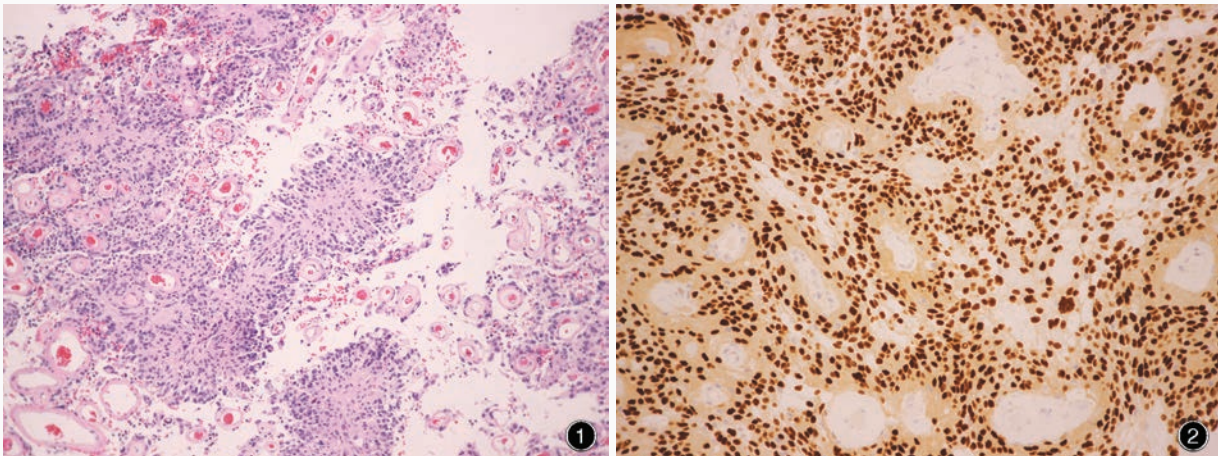


图1 光学显微镜观察显示,血管周围假“菊形团”样结构 HE染色 ×100 图2 光学显微镜观察显示,肿瘤细胞胞核PR呈阳性 免疫组织化学染色(EnVision二步法) ×200

Figure 1 Optical microscopy findings showed the tumor was characterized by a "pseudorosettes" growth pattern. HE staining × 100 Figure 2 Optical microscopy findings showed nuclei of tumor cells were positive for PR. Immunohistochemical staining (EnVision) ×200

乳头状脑膜瘤是罕见的脑膜瘤亚型,定义为肿瘤大部分区域系血管周围假“菊形团”样结构,属WHO III级,好发于青少年(其中儿童约占50%)。组织学形态观察,肿瘤细胞较单一,呈脑膜上皮样,细胞间黏附性较差,胞核呈圆形且形态一致,排列于血管周围,类似室管膜瘤的血管周围假“菊形团”样结构(图1),亦可见血管透明变性、增厚,核分裂象多少不一,呈现高级别肿瘤组织学形态特征。免疫组织化学染色,肿瘤细胞胞膜表达上皮膜抗原(EMA),胞核表达孕激素受体(PR,图2),胞质表达波形蛋白(Vim)。

(天津市环湖医院病理科阎晓玲供稿)