

H, Weber YG. PRRT2 - related disorders: further PKD and ICCA cases and review of the literature. J Neurol, 2013, 260: 1234-1244.

[23] Mills R, Haga SB. Genomic counseling: next generation counseling. J Genet Couns, 2014, 23:689-692.

[24] Weil J. Genetic counselling in the era of genomic medicine: as

we move towards personalized medicine, it becomes more important to help patients understand genetic tests and make complex decisions about their health. EMBO Rep, 2002, 3:590-593.

(收稿日期:2017-06-24)

· 临床医学图像 ·

化生型脑膜瘤

doi: 10.3969/j.issn.1672-6731.2017.08.013

Metaplastic meningioma

YAN Xiao-ling

Department of Pathology, Tianjin Huanhu Hospital, Tianjin 300350, China (Email: ll934065@126.com)

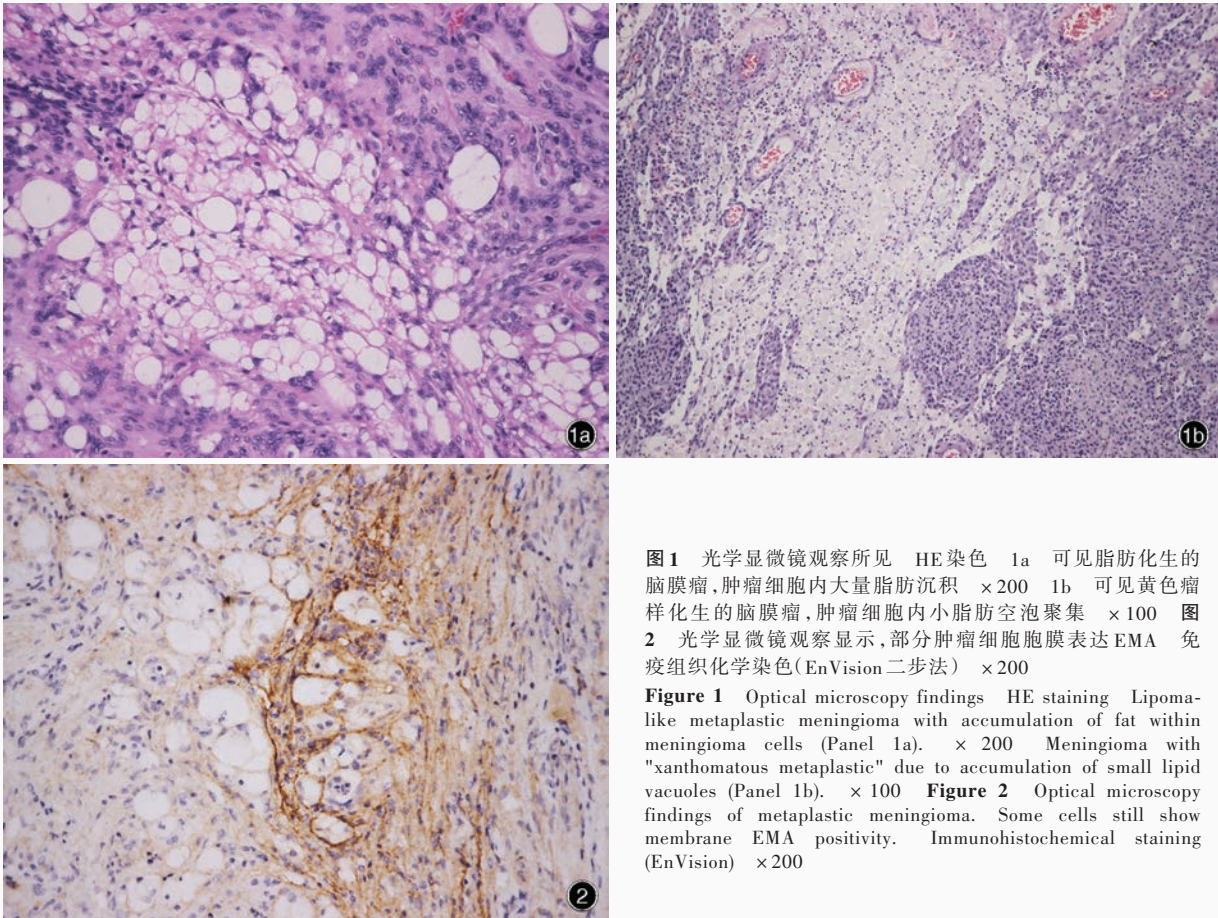


图1 光学显微镜观察所见 HE染色 1a 可见脂肪化生的脑膜瘤,肿瘤细胞内大量脂肪沉积 ×200 1b 可见黄色瘤样化生的脑膜瘤,肿瘤细胞内小脂肪空泡聚集 ×100 图2 光学显微镜观察显示,部分肿瘤细胞胞膜表达EMA 免疫组织化学染色(EnVision 二步法) ×200

Figure 1 Optical microscopy findings HE staining Lipoma-like metaplastic meningioma with accumulation of fat within meningioma cells (Panel 1a). × 200 Meningioma with "xanthomatous metaplastic" due to accumulation of small lipid vacuoles (Panel 1b). × 100 Figure 2 Optical microscopy findings of metaplastic meningioma. Some cells still show membrane EMA positivity. Immunohistochemical staining (EnVision) × 200

化生型脑膜瘤是脑膜瘤的一种亚型,组织学形态可见典型脑膜瘤组织中存在明显的局灶性或弥漫性间叶成分,如骨骼、软骨、脂肪(图1a)、黏液或黄色瘤样组织(图1b),可以是一种或几种成分的组合,临床意义不明,有些并非真的化生,如脂肪沉积可能较脂肪化生更合适,即上皮膜抗原(EMA)阳性(图2)的脑膜上皮细胞胞质内可见脂肪沉积、空泡形成或其他改变。应注意区分是脑膜瘤骨化还是脑膜瘤骨组织浸润。

(天津市环湖医院病理科阎晓玲供稿)