

- B, Benyahia B, Suarez F, Maisonobe T, Koenig M, Durr A, Stern MH, Dubois d'Enghien C, Fischer A, Vidailhet M, Stoppa-Lyonnet D, Grabli D, Anheim M. The pleiotropic movement disorders phenotype of adult ataxia-telangiectasia. *Neurology*, 2014, 83:1087-1095.
- [15] Trimis GG, Athanassaki CK, Kanariou MM, Giannoulia-Karantana AA. Unusual absence of neurologic symptoms in a six-year old girl with ataxia-telangiectasia. *J Postgrad Med*, 2004, 50:270-271.
- [16] Cavalieri S, Funaro A, Pappi P, Migone N, Gatti RA, Brusco A. Large genomic mutations within the ATM gene detected by MLPA, including a duplication of 41 kb from exon 4 to 20. *Ann Hum Genet*, 2008, 72:10-18.
- [17] Toyoshima M, Hara T, Zhang H, Yamamoto T, Akaboshi S, Nanba E, Ohno K, Hori N, Sato K, Takeshita K. Ataxia-telangiectasia without immunodeficiency: novel point mutations within and adjacent to the phosphatidylinositol 3-kinase-like domain. *Am J Med Genet*, 1998, 75:141-144.
- [18] McConville CM, Stankovic T, Byrd PJ, McGuire GM, Yao QY, Lennox GG, Taylor MR. Mutations associated with variant phenotypes in ataxia-telangiectasia. *Am J Hum Genet*, 1996, 59:320-330.
- [19] Gatti RA, Tward A, Concannon P. Cancer risk in ATM heterozygotes: a model of phenotypic and mechanistic differences between missense and truncating mutations. *Mol Genet Metab*, 1999, 68:419-423.
- [20] Ahmed M, Rahman N. ATM and breast cancer susceptibility. *Oncogene*, 2006, 25:5906-5911.
- (收稿日期:2017-06-27)

## · 临床医学图像 ·

### 细胞性神经鞘瘤

doi:10.3969/j.issn.1672-6731.2017.07.014

#### Cellular schwannoma

YAN Xiao-ling

Department of Pathology, Tianjin Huanhu Hospital, Tianjin 300350, China (Email: ll934065@126.com)

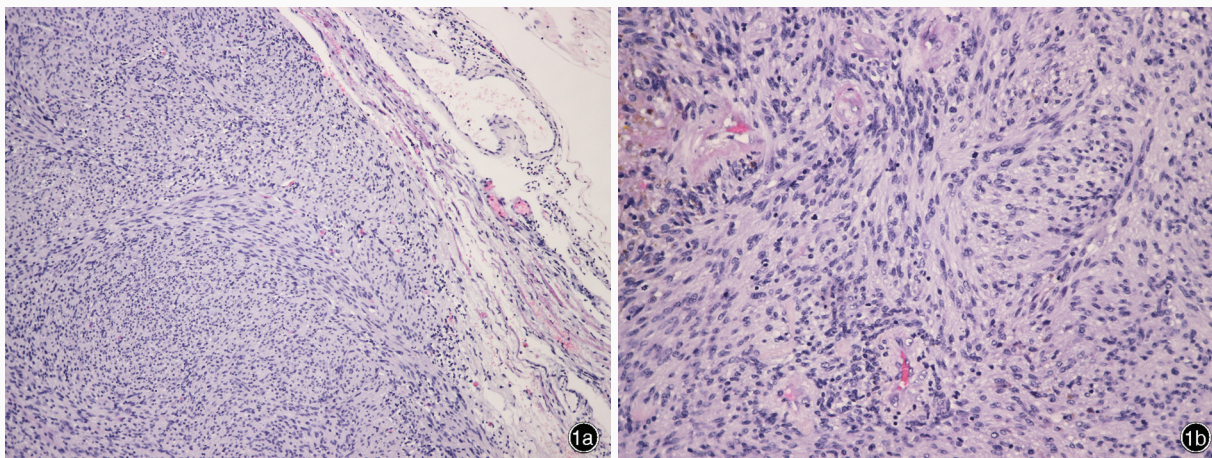


图1 光学显微镜观察所见 HE染色 1a 细胞性神经鞘瘤有包膜,Antoni A区明显增多,肿瘤细胞密度较高 ×100 1b 核分裂象易见 ×200

Figure 1 Optical microscopy findings HE staining Cellular schwannoma is encapsulated and consists mostly of Antoni A tissue, with increased cellularity (Panel 1a). ×100 Mitoses are regularly seen (Panel 1b). ×200

细胞性神经鞘瘤是神经鞘瘤的一种亚型,好发于女性。肿瘤主要或仅由 Antoni A 型区组成,未见 Verocay 小体,有包膜,血管壁透明样变明显。组织学形态可见肿瘤组织主要由紧密束状、席纹状或非特殊排列的梭形细胞组成(图 1a),漩涡状结构显著但不常见,包膜内或包膜下可见淋巴细胞聚集和数量不等的富含脂质组织细胞;梭形细胞胞质呈嗜酸性,胞核呈梭形或卵圆形、染色质深染,轻度多形性,核分裂象易见(图 1b)。免疫表型和超微结构与分化良好的神经鞘瘤无差异。

(天津市环湖医院病理科阎晓玲供稿)