

and Family Planning Commission. Criteria and practical guidance for determination of brain death in adults (BQCC version). Chin Med J (Engl), 2013, 126:4786-4790.

- [7] Su Y, Yang Q, Liu G, Zhang Y, Ye H, Gao D, Zhang Y, Chen W. Diagnosis of brain death: confirmatory tests after clinical test.

Chin Med J (Engl), 2014, 127:1272-1277.

- [8] Hocker S, Wijdicks EF. Simulation training in brain death determination. Semin Neurol, 2015, 35:180-187.

(收稿日期:2015-11-19)

· 临床医学图像 ·

泌乳激素腺瘤

doi: 10.3969/j.issn.1672-6731.2015.12.018

Prolactin producing adenoma

YAN Xiao-ling

Department of Pathology, Tianjin Huanhu Hospital, Tianjin 300060, China (Email: ll934065@126.com)

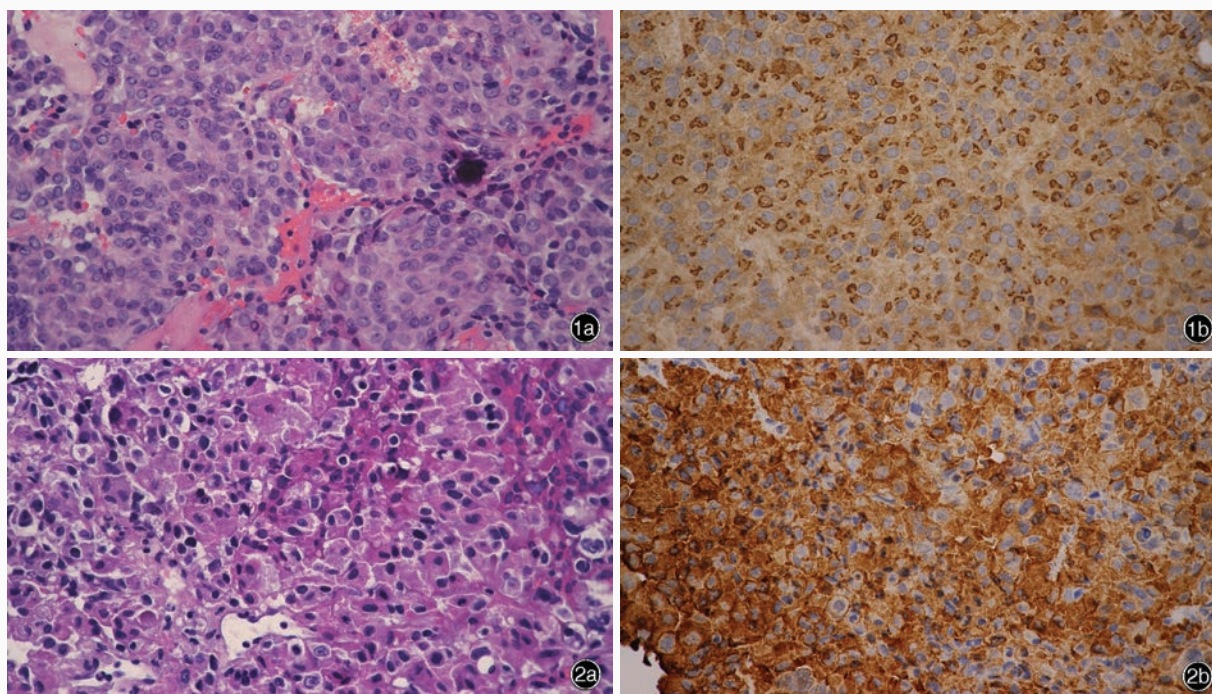


图 1 疏颗粒型泌乳激素腺瘤光学显微镜观察所见 高倍放大 1a 胞质呈嫌色性,可见沙砾体 HE 染色 1b 核周泌乳素呈阳性 免疫组织化学染色(EnVision 二步法) **图 2** 密颗粒型泌乳激素腺瘤光学显微镜观察所见 高倍放大 2a 胞质呈嗜酸性 HE 染色 2b 胞质泌乳素呈弥漫性强阳性 免疫组织化学染色(EnVision 二步法)

Figure 1 Optical microscopy findings of sparsely granulated prolactin producing adenoma. high power magnified Sparsely granulated prolactin producing adenoma cells are typically chromophobic with round nuclei, and psammoma bodies can be seen (Panel 1a). HE staining Immunostains for prolactin show a characteristic paranuclear positivity (Panel 1b). Immunohistochemical staining (EnVision) **Figure 2** Optical microscopy findings of densely granulated prolactin producing adenoma. high power magnified Densely granulated prolactin producing adenoma cells show stronger cytoplasmic acidophilia (Panel 2a). HE staining Immunostains for prolactin is strong and diffuse throughout the cytoplasm (Panel 2b). Immunohistochemical staining (EnVision)

泌乳激素腺瘤源于腺垂体的泌乳素细胞,是分泌泌乳素(PRL)的垂体良性肿瘤。大体标本观察呈红褐色,大的腺瘤可发生纤维化和囊性变。大多数泌乳激素腺瘤为疏颗粒型,而密颗粒型和嗜酸性干细胞腺瘤罕见。疏颗粒型泌乳激素腺瘤呈弥漫性或罕见的乳头状生长方式,异型性不明显,肿瘤细胞体积较大并可见伸长,胞质呈嫌色性或轻微嗜酸性,有时可见钙化球和沙砾体(图 1a);免疫组织化学染色,泌乳素在核周呈阳性,且大部分区域免疫反应较强(图 1b)。密颗粒型泌乳激素腺瘤胞质呈较强的嗜酸性(图 2a);免疫组织化学染色,泌乳素弥漫性分布于整个胞质(图 2b)。

(天津市环湖医院病理科阎晓玲供稿)