

single-agent bevacizumab in a nonagenarian patient with metastatic alveolar soft part sarcoma. *Anticancer Drugs*, 2012, 23:745-748.

S, Conca E, Bozzi F, Cassinelli G, Gronchi A, Casali PG, Pilotti S. Sunitinib in advanced alveolar soft part sarcoma: evidence of a direct antitumor effect. *Ann Oncol*, 2011, 22:1682-1690.

[29] Stacchiotti S, Negri T, Zaffaroni N, Palassini E, Morosi C, Brich

(收稿日期:2015-06-09)

· 临床医学图像 ·

生长激素腺瘤

doi: 10.3969/j.issn.1672-6731.2015.07.018

Growth hormone producing adenoma

YAN Xiao-ling

Department of Pathology, Tianjin Huanhu Hospital, Tianjin 300060, China (Email: ll934065@126.com)

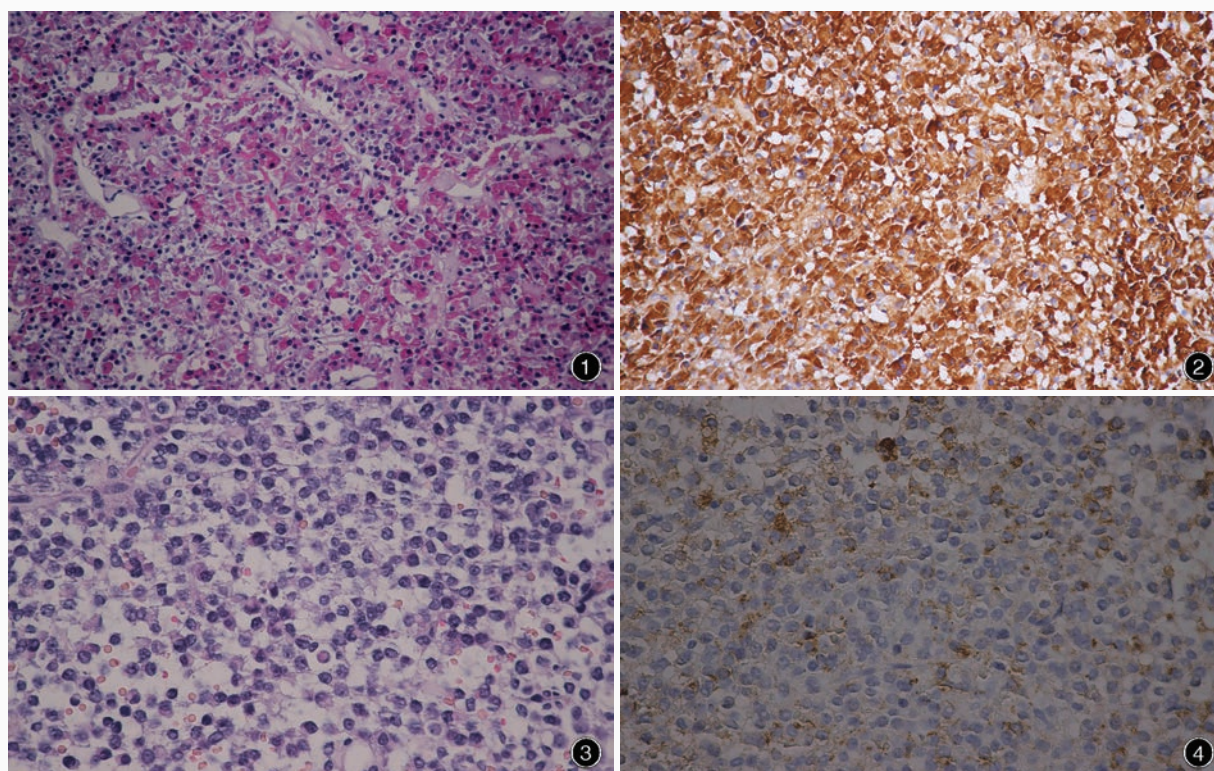


图 1 光学显微镜观察显示,密颗粒型生长激素腺瘤细胞呈巢状,胞质呈强嗜酸性 HE 染色 中倍放大 **图 2** 光学显微镜观察显示,密颗粒型肿瘤细胞 GH 呈一致性弥漫性强阳性 免疫组织化学染色(SP 二步法) 中倍放大 **图 3** 光学显微镜观察显示,疏颗粒型生长激素腺瘤细胞中等大小、呈圆形,主要特征为嗜酸性纤维小体造成的核内凹 HE 染色 高倍放大 **图 4** 光学显微镜观察显示,疏颗粒型生长激素腺瘤细胞少量表达 GH 免疫组织化学染色(SP 二步法) 高倍放大

Figure 1 Optical microscopy findings. The densely granulated somatotroph adenoma cells formed as nest and had abundant strongly acidophilic cytoplasm. HE staining medium power magnified **Figure 2** Optical microscopy findings. The densely granulated cells showed strong, uniform and diffuse positivity for GH. Immunohistochemical staining (SP) medium power magnified **Figure 3** Optical microscopy findings. The sparsely granulated tumor cells were medium sized and round, mainly characterized by nuclear indentations by acidophilic fibrous bodies. HE staining high power magnified **Figure 4** Optical microscopy findings. The sparsely granulated cells showed scant immunoreactivity for GH. Immunohistochemical staining (SP) high power magnified

分泌生长激素(GH)的垂体腺瘤可随发病年龄出现巨人症或肢端肥大症,无功能病例少见。纯生长激素腺瘤是由单一分泌生长激素的肿瘤细胞组成,分为密颗粒型和疏颗粒型。密颗粒型生长激素腺瘤由中等大小、圆形或多角形嗜酸性肿瘤细胞组成,呈弥漫性生长,胞质呈颗粒状,胞核圆形,染色质纤细、松散,核仁明显(图1)。胞质GH呈一致性弥漫性强阳性(图2)。疏颗粒型生长激素腺瘤是嫌色性腺瘤,肿瘤细胞较小、呈圆形,部分含明显核仁,核周胞质区的淡嗜酸性纤维小体即圆形包涵体是其诊断特征(图3)。纤维小体挤压胞核向外周移动,呈新月形。胞质GH表达不一致,常较稀少(图4)。

(天津市环湖医院病理科阎晓玲供稿)