

Child Neurol, 1998, 13:624-628.

[6] Pradhan SA, Rather MI, Tiwari A, Bhat VK, Kumar A. Evidence that TSC2 acts as a transcription factor and binds to and represses the promoter of Epiregulin. *Nucleic Acids Res*, 2014, 42:6243-6255.

[7] Ehninger D. From genes to cognition in tuberous sclerosis: implications for mTOR inhibitor -based treatment approaches. *Neuropharmacology*, 2013, 68:97-105.

[8] Shimobayashi M, Hall MN. Making new contacts: the mTOR network in metabolism and signalling crosstalk. *Nat Rev Mol Cell Biol*, 2014, 15:155-162.

[9] Curatolo P, Maria BL. Tuberous sclerosis. *Handb Clin Neurol*, 2013, 111:323-331.

[10] Au KS, Williams AT, Roach ES, Batchelor L, Sparagana SP, Delgado MR, Wheless JW, Baumgartner JE, Roa BB, Wilson CM, Smith - Knuppel TK, Cheung MY, Whittemore VH, King TM, Northrup H. Genotype/phenotype correlation in 325 individuals referred for a diagnosis of tuberous sclerosis complex in the United States. *Genet Med*, 2007, 9:88-100.

[11] Fu C, Ess KC. Conditional and domain-specific inactivation of the Tsc2 gene in neural progenitor cells. *Genesis*, 2013, 51:284-292.

[12] Napolioni V, Moavero R, Curatolo P. Recent advances in neurobiology of Tuberous Sclerosis Complex. *Brain Dev*, 2009, 31:104-113.

[13] van Eeghen AM, Black ME, Pulsifer MB, Kwiatkowski DJ, Thiele EA. Genotype and cognitive phenotype of patients with tuberous sclerosis complex. *Eur J Hum Genet*, 2012, 20:510-515.

(收稿日期:2015-01-15)

· 临床医学图像 ·

纤维型(纤维母细胞型)脑膜瘤

doi: 10.3969/j.issn.1672-6731.2015.04.017

Fibrous (fibroblastic) meningioma

YAN Xiao-ling

Department of Pathology, Tianjin Huanhu Hospital, Tianjin 300060, China (Email: ll934065@126.com)

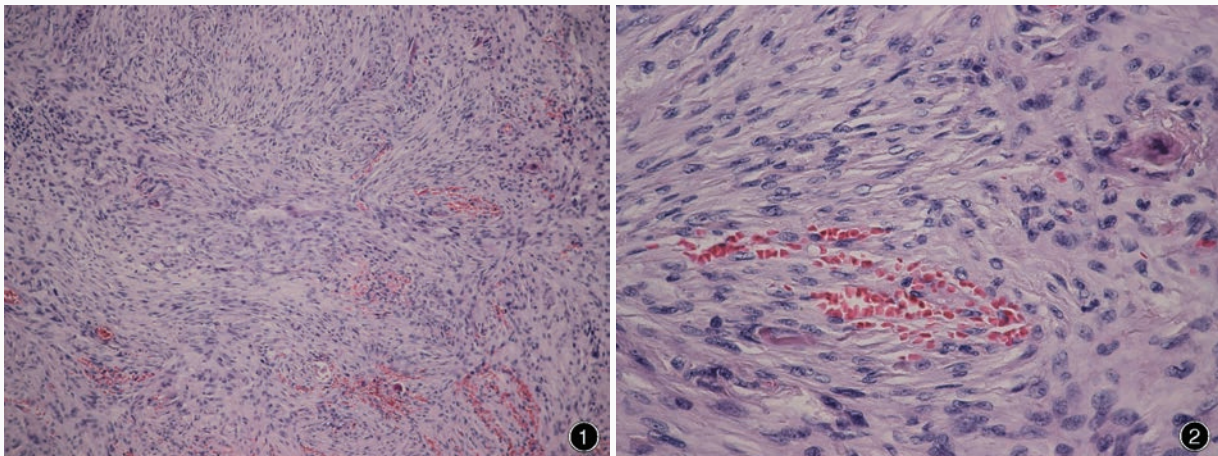


图1 光学显微镜观察显示,纤维型(纤维母细胞型)脑膜瘤细胞呈束状交叉排列,细胞间胶原纤维数量不等 HE染色 低倍放大 图2 光学显微镜观察显示,纤维型(纤维母细胞型)脑膜瘤细胞胞核细长,局部仍具有脑膜皮型脑膜瘤细胞特点 HE染色 高倍放大

Figure 1 Optical microscopy findings. Fibrous (fibroblastic) meningioma with intersecting fascicles of spindle cells and variable intercellular collagen deposition could be found. HE staining low power magnified Figure 2 Optical microscopy findings. Fibrous (fibroblastic) meningioma cells had elongate nuclei, but retained the features of meningothelial cells. HE staining high power magnified

纤维型(纤维母细胞型)脑膜瘤细胞密度相对较低,纤维母细胞样梭形细胞呈平行或束状交叉排列在富于胶原纤维和网状纤维的基质内(图1),“漩涡”状结构、砂粒体结构和核内假包涵体不常见。胞核呈卵圆形或细长,局部仍具有脑膜皮型脑膜瘤细胞特点(图2)。纤维型(纤维母细胞型)脑膜瘤细胞形成宽的束状结构,细胞间胶原纤维数量不等,在部分病例中可见数量较多的胶原纤维。

(天津市环湖医院病理科阎晓玲供稿)